

6

5

4

3

2

1

REVISION RECORD

REVISION RECORD			
LTR	ECO NO:	APPROVED:	DATE:

RC01 First Release 2020-07-09

RC02 J1 IO_debug_connector PIN1 connect to FMU_VDD_3V3 in RC01
Connect it to IO_VDD_3V3 in RC02 2020-08-20

RC03 Ethernet Transceiver change to LAN8742AI 2020-10-28

RC04 J9 PIN7 connect to GND, PIN6 connect to NFC_GPIO
J17,J18 change to molex SD502443-002
Add C79,C81,C82,C83 to prevent BQ24315 entering current limiting by momentary current 2021-04-12

RC05 U5 PIN1 Connect TO PIN2 2022-05-20

RC06 PWM_OUT Add TXS0108 2023-10-10

RC07 Redesign PCB layout 2023-10-10

RC08 Redesign PCB layout 2023-10-10

RC09 Redesign PCB layout 2023-10-10

RC14 IO PWM_OUT TXS0108 change to SN74LVC8T245RHLLR, delete FMU PWM_OUT TXS0108 2025-2-11

COMPANY: Holypro

TITLE: PAB-BASE

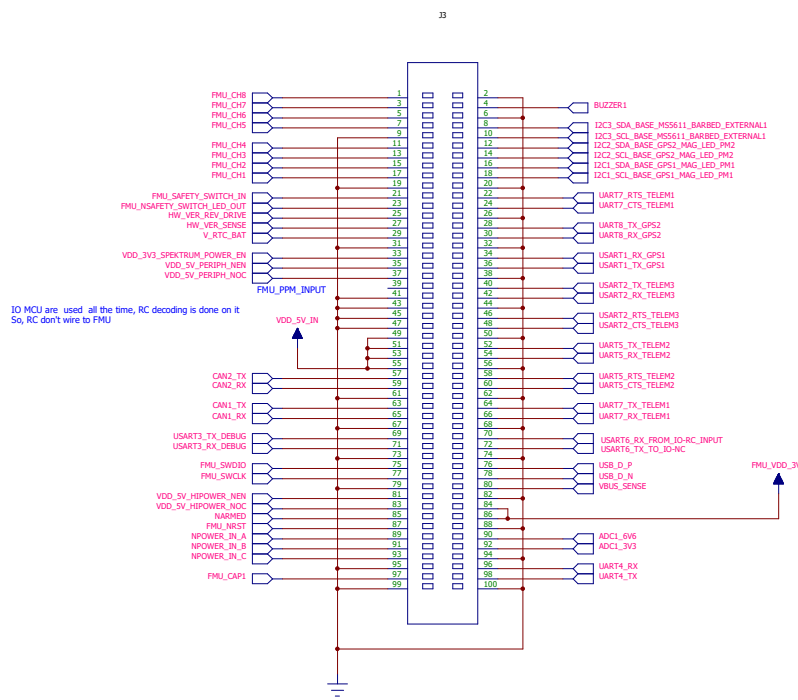
DRAWN: Jamming	DATED: 2025-2-11
CHECKED: Jamming	DATED: 2025-2-11
QUALITY CONTROL: Jamming	DATED: 2025-2-11
RELEASED: Jamming	DATED: 2025-2-11

CODE: 027	SIZE: A2	DRAWING NO: REVISIONS	REV: RC14
SCALE: 1:1		SHEET: 1 OF 11	

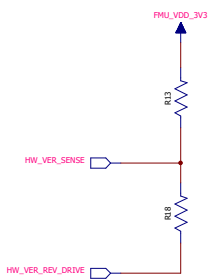
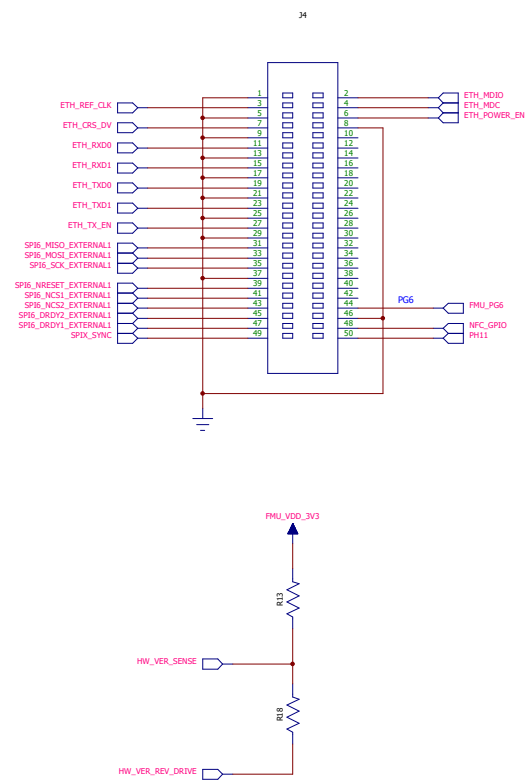
REVISION RECORD			
LTR	ECO NO:	APPROVED:	DATE:

D

D



IO MCU are used all the time, RC decoding is done on it
So, RC don't wire to FMU



C

C

B

B

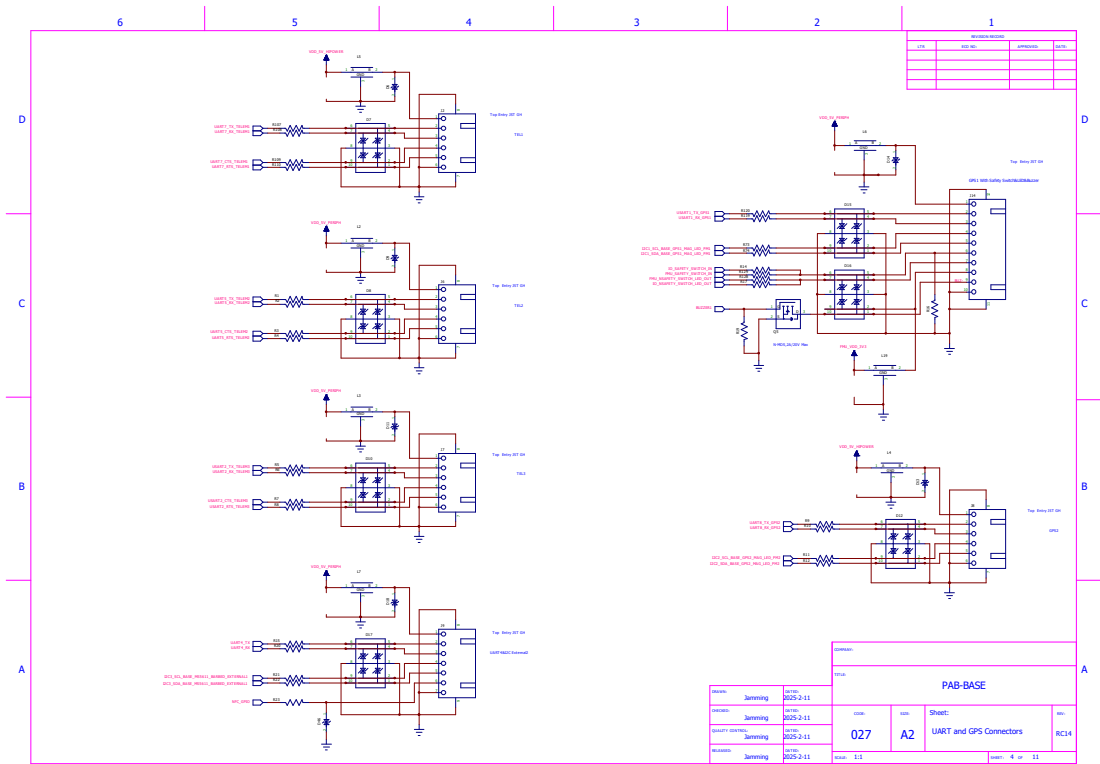


A

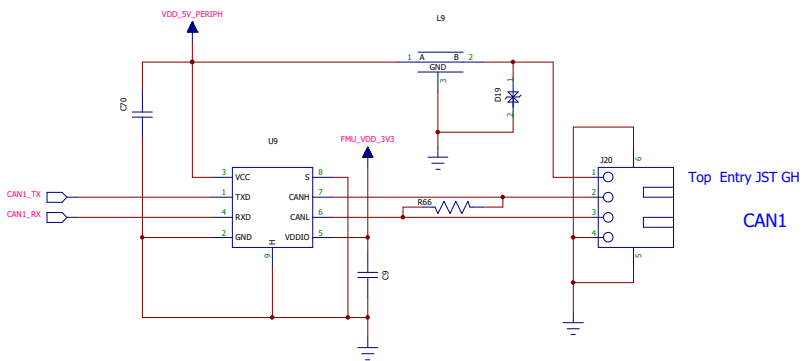
A

COMPANY:			
Sheet:			
PAB-BASE			
CODE:	SIZE:	Sheet:	REV:
027	A2	PAB and PPB	RC14
SCALE: 1:1		SHEET: 2 OF 11	

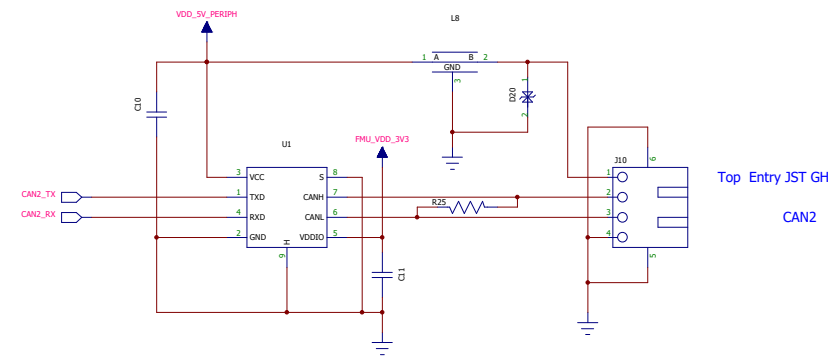
DRAWN:	DATED:
Jamming	2025-2-11
CHECKED:	DATED:
Jamming	2025-2-11
QUALITY CONTROL:	DATED:
Jamming	2025-2-11
RELEASED:	DATED:
Jamming	2025-2-11



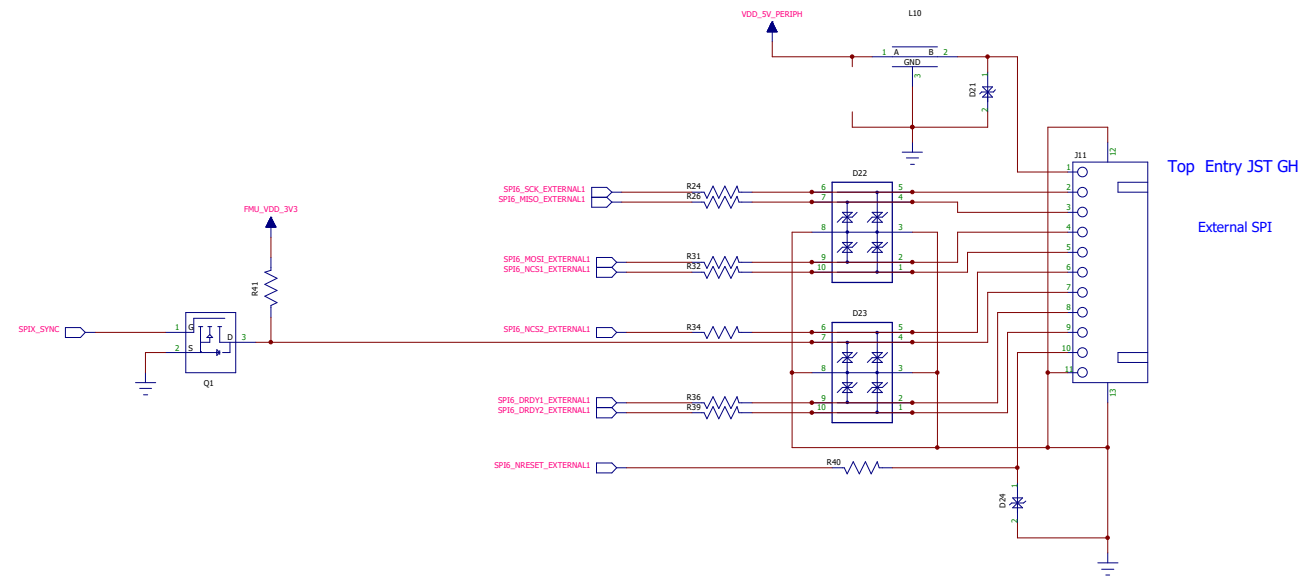
REVISION RECORD			
LTR	ECO NO:	APPROVED:	DATE:



Top Entry JST GH
CAN1



Top Entry JST GH
CAN2



Top Entry JST GH
External SPI

COMPANY:			
Sheet:			
PAB-BASE			
CODE:	SIZE:	Sheet:	REV:
027	A2	CAN and SPI bus	RC14
SCALE: 1:1	SHEET: 5 of 11		

DRAWN:	Jamming	DATED:	2025-2-11
CHECKED:	Jamming	DATED:	2025-2-11
QUALITY CONTROL:	Jamming	DATED:	2025-2-11
RELEASED:	Jamming	DATED:	2025-2-11

D

D

C

C

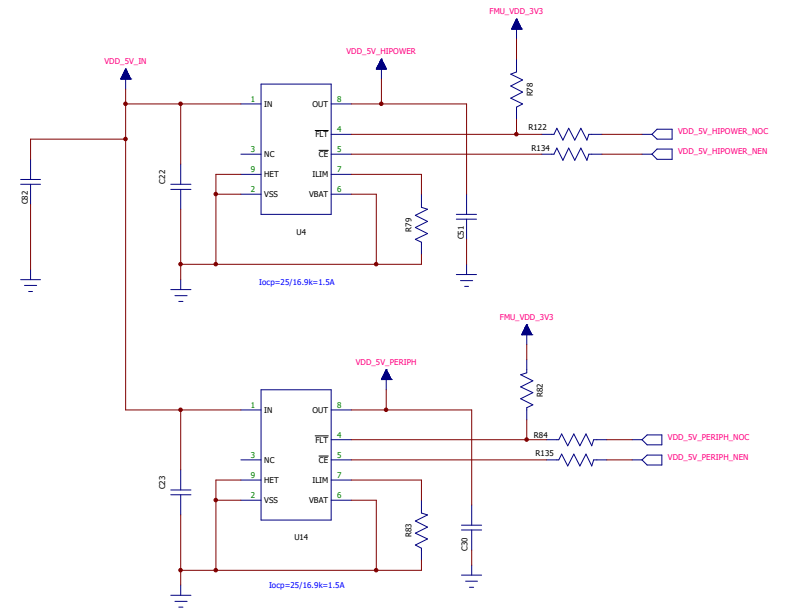
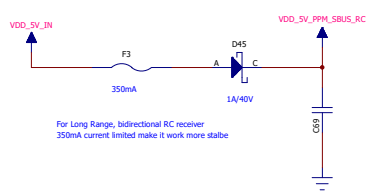
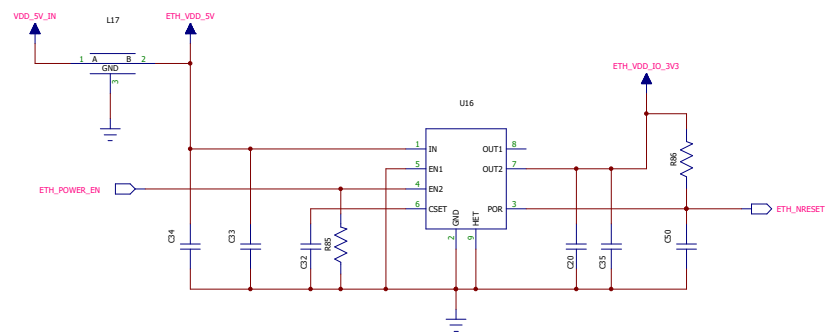
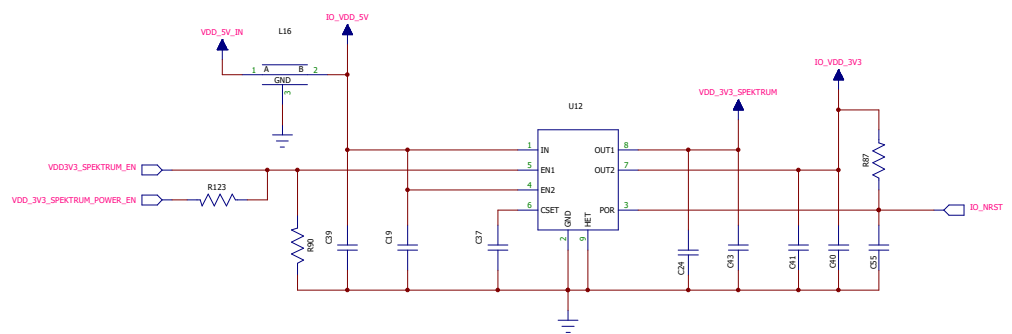
B

B

A

A

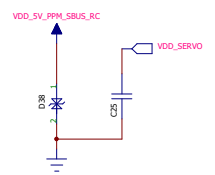
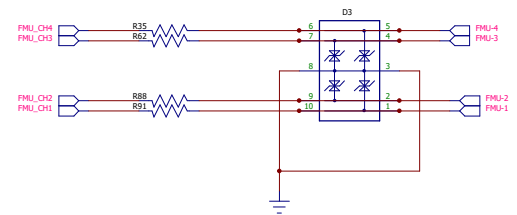
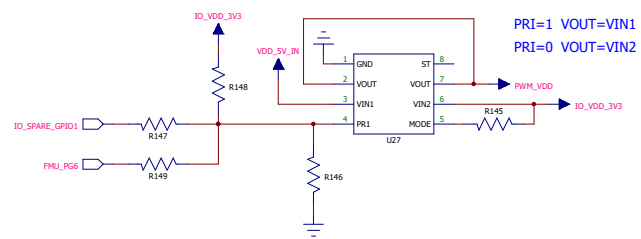
REVISION RECORD			
LTR	ECO NO:	APPROVED:	DATE:



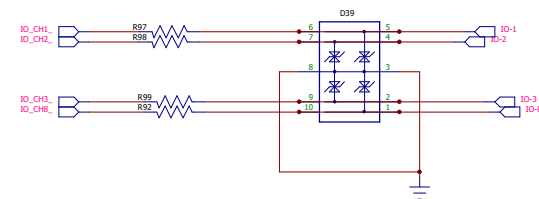
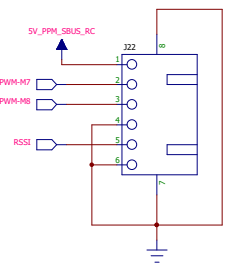
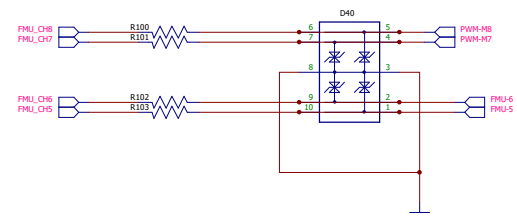
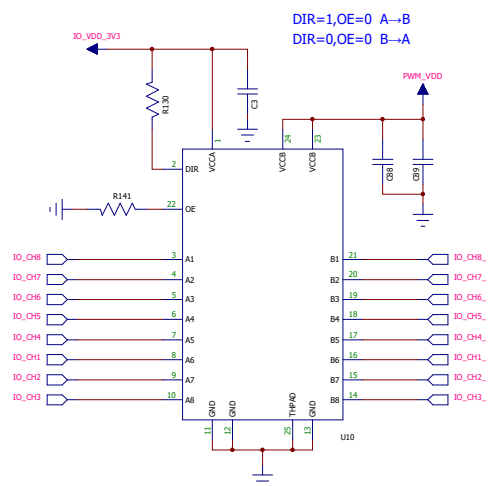
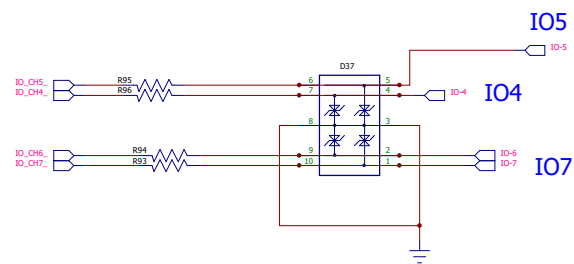
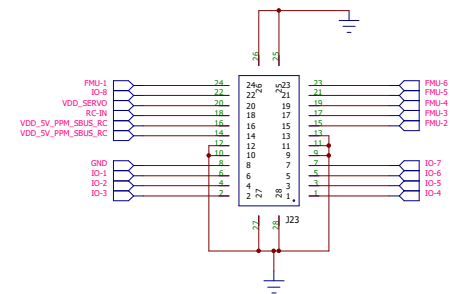
COMPANY:			
Sheet:			
PAB-BASE			
CODE:	SIZE:	Sheet:	REV:
027	A2	Power	RC14
SCALE: 1:1			SHEET: 8 of 11

DRAWN:	DATED:
Jamming	2025-2-11
CHECKED:	DATED:
Jamming	2025-2-11
QUALITY CONTROL:	DATED:
Jamming	2025-2-11
RELEASED:	DATED:
Jamming	2025-2-11

REVISION RECORD			
LTR	ECO NO:	APPROVED:	DATE:



J22,J23,J24,J25 3mm distance from each other
To plug in more easy



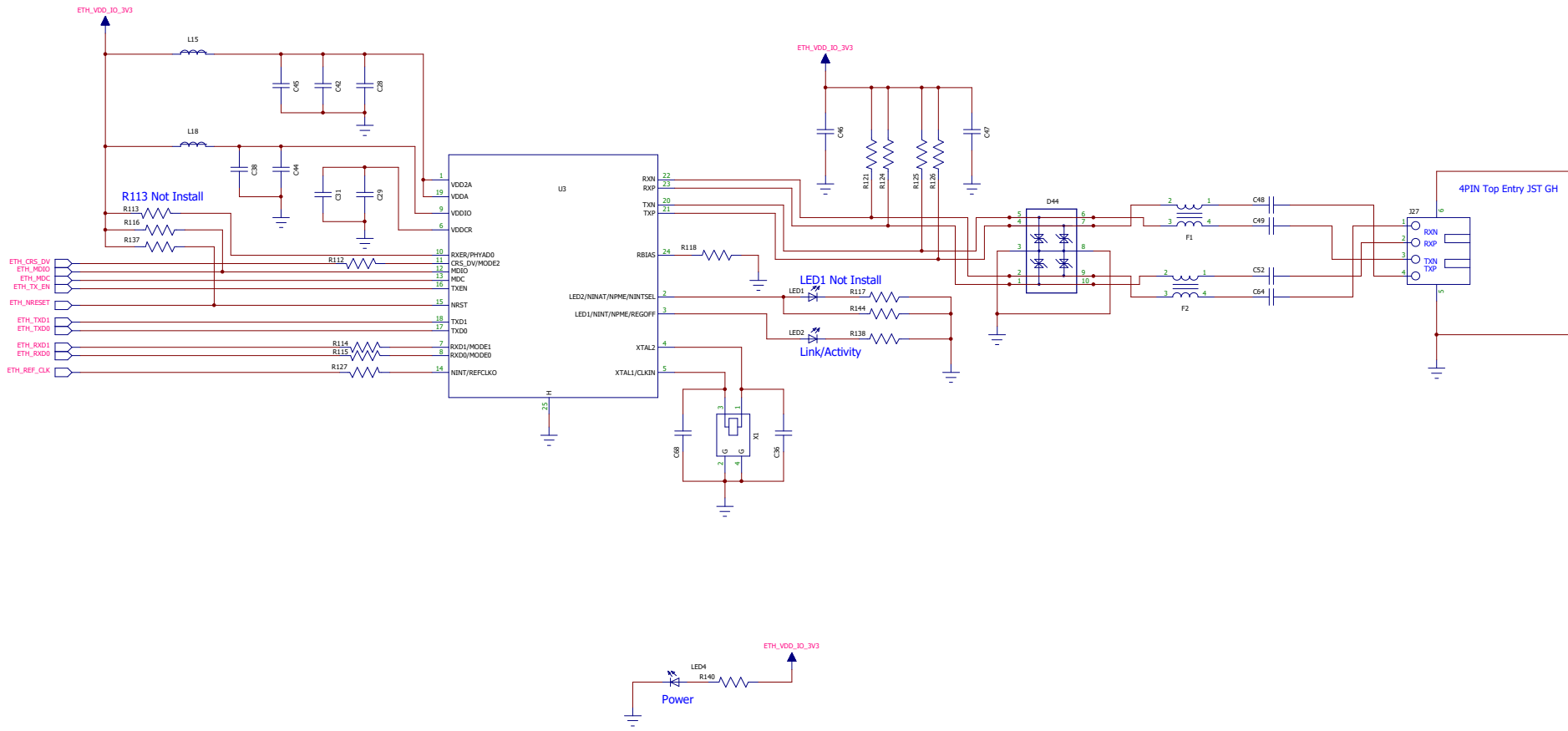
COMPANY: PAB-BASE

Sheet: 9 of 11

DRAWN:	Jamming	DATED:	2025-2-11
CHECKED:	Jamming	DATED:	2025-2-11
QUALITY CONTROL:	Jamming	DATED:	2025-2-11
RELEASED:	Jamming	DATED:	2025-2-11

CODE:	SIZE:	Sheet:	REV:
027	A2	REVISIONS	RC14
SCALE: 1:1		SHEET: 9 of 11	

REVISION RECORD			
LTR	ECO NO:	APPROVED:	DATE:



COMPANY:

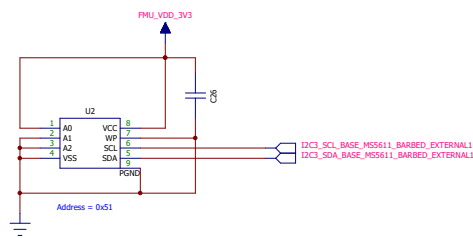
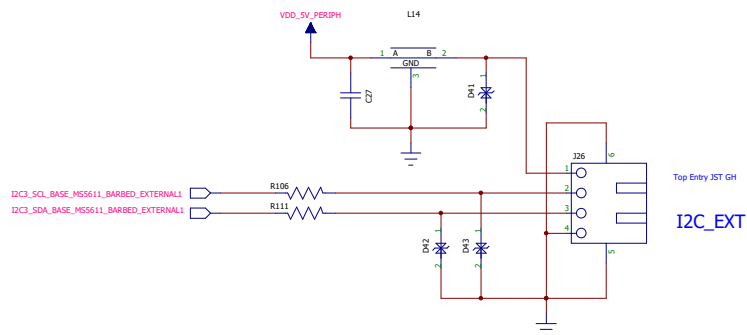
Sheet:

PAB-BASE

DRAWN:	Jamming	DATED:	2025-2-11
CHECKED:	Jamming	DATED:	2025-2-11
QUALITY CONTROL:	Jamming	DATED:	2025-2-11
RELEASED:	Jamming	DATED:	2025-2-11

CODE:	027	SIZE:	A2	Sheet:	Ethernet 100Base-TX	REV:	RC14
SCALE: 1:1		SHEET: 10 of 11					

REVISION RECORD			
LTR	ECO NO:	APPROVED:	DATE:



COMPANY:			
TITLE: PAB-BASE			
DRAWN: Jamming	DATED: 2025-2-11	CODE: 027	SIZE: A2
CHECKED: Jamming	DATED: 2025-2-11	Sheet: Sensors and EXT I2C	
QUALITY CONTROL: Jamming	DATED: 2025-2-11	REV: RC14	
RELEASED: Jamming	DATED: 2025-2-11	SCALE: 1:1	SHEET: 11 of 11